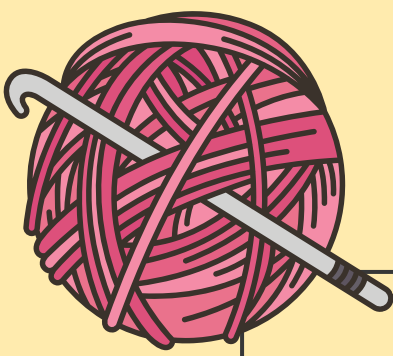


# EUCLID CHAPTER MONTHLY SCHEDULE

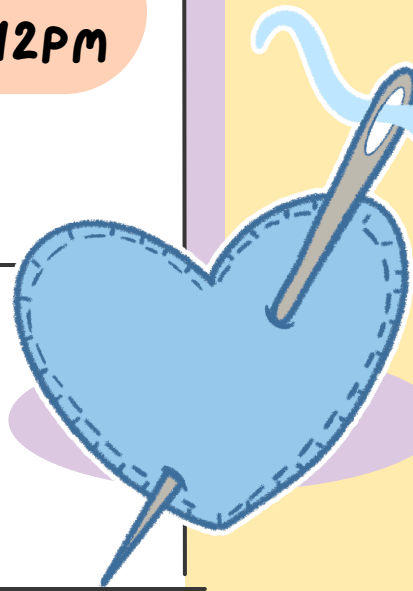
STORE HOURS: TUES & THURS 10AM - 4PM, SAT 10AM - 2PM

VOLUNTEERS ARE INVITED TO COME DURING ALL STORE HOURS - REGISTER ONLINE



HTTPS://WWW.SEW4SERVICE.ORG/CLEVELAND-EAST

	SUNDAY	MONDAY	TUESDAY	WEDNESDAY	THURSDAY	FRIDAY	SATURDAY
FIRST			SEWING & CROCHETING OPEN STUDIO 4 - 7PM	CHARITY KIT 10AM - 2PM SEWING SKILLS 5:30 - 7:30 PM	CHARITY SEWING 10AM - 2PM (SAME WEEK AS OPEN STUDIO)		LEARN TO SEW 9:30AM - 12PM
SECOND				CHARITY KIT 10AM - 2PM CROCHETING SKILLS 5:30 - 7:30 PM			LEARN TO SEW 9:30AM - 12PM TEXTILE ART WITH MICHELLE 1PM - 4PM
THIRD			SEWING & CROCHETING OPEN STUDIO 4 - 7PM	CHARITY KIT 10AM - 2PM SEWING SKILLS 5:30 - 7:30 PM	CHARITY SEWING 10AM - 2PM (SAME WEEK AS OPEN STUDIO)		LEARN TO SEW 9:30AM - 12PM CHARITY KNIT & CROCHET DAY 10AM - 2PM
FOURTH			HOOKS & BOOKS 5 - 7PM	CHARITY KIT 10AM - 2PM CROCHETING SKILLS 5:30 - 7:30 PM			LEARN TO SEW 9:30AM - 12PM
FIFTH			MACHINE CLASS 5:30 - 7:30 PM	NEW VOLUNTEER ORIENTATION 2PM - 3PM (LAST WED)			



# LAKEWOOD CHAPTER MONTHLY SCHEDULE

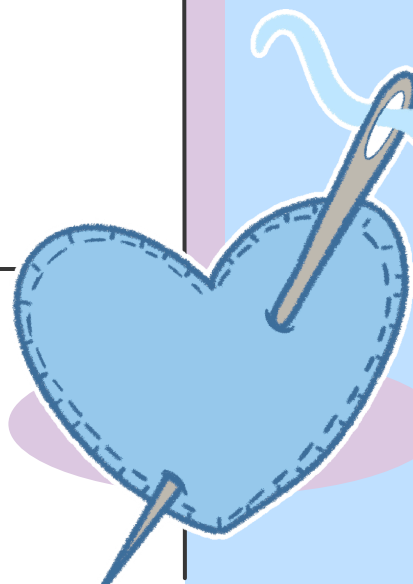
STORE HOURS: MON & WED 10AM - 2PM, TUES & THURS 3PM - 7PM, 1<sup>ST</sup> AND 3<sup>RD</sup> SAT 10AM - 2PM

VOLUNTEERS ARE INVITED TO COME DURING ALL STORE HOURS - REGISTER ONLINE



HTTPS://WWW.SEW4SERVICE.ORG/CLEVELAND-WEST

	SUNDAY	MONDAY	TUESDAY	WEDNESDAY	THURSDAY	FRIDAY	SATURDAY
FIRST			CROCHETING OPEN STUDIO 4 - 7PM	QUILT FINISHING 10AM - 2PM	CHARITY SEWING 3PM - 5PM  LEARN TO SEW 5:30 - 8:00 PM		NEW VOLUNTEER ORIENTATION 9:30 AM MACHINE REPAIR WORKDAY (LUCY) 10AM - 2PM SEWING WITH JENNY 2PM - 4PM
SECOND		NEW VOLUNTEER ORIENTATION 9:30 AM	CULTURAL CURIOSITY 5 - 6PM 6 - 7PM	QUILT FINISHING 10AM - 2PM	CHARITY SEWING 3PM - 5PM  LEARN TO SEW 5:30 - 8:00 PM	LONGARM QUILTING WORKDAY 10AM - 2PM	
THIRD			NEW VOLUNTEER ORIENTATION 2 PM  SEWING OPEN STUDIO 4 - 7PM	QUILT FINISHING 10AM - 2PM	CHARITY SEWING 3PM - 5PM  LEARN TO SEW 5:30 - 8:00 PM		QUILTING WITH JENNY 2PM - 4PM
FOURTH			CROCHET WITH DOKI 5PM - 7PM	NEW VOLUNTEER ORIENTATION 9:30 AM  QUILT FINISHING 10AM - 2PM	CHARITY SEWING 3PM - 5PM  LEARN TO SEW 5:30 - 8:00 PM	LONGARM QUILTING WORKDAY 10AM - 2PM	
FIFTH			MACHINE REPAIR WORKDAY (GINGER) 3PM - 7PM (SELECT TUESDAYS)		OPEN STUDIO 3PM - 7PM		



# ALLIANCE CHAPTER MONTHLY SCHEDULE

STORE HOURS: TUES & THURS 10AM - 4PM, 1<sup>ST</sup> AND 4<sup>TH</sup> SAT 10AM - 1PM

VOLUNTEERS ARE INVITED TO COME DURING ALL STORE HOURS - REGISTER ONLINE



SUNDAY	MONDAY	TUESDAY	WEDNESDAY	THURSDAY	FRIDAY	SATURDAY
FIRST		<p>OPEN STUDIO 10:30AM - 2:30PM</p> <p>LEARN SEWING MACHINE 2 - 4PM</p>		<p>CHARITY SEWING 10:30PM - 3:30PM</p>		<p>LEARN TO CROCHET 11AM - 1 PM</p>
SECOND		<p>OPEN STUDIO 10:30AM - 2:30PM</p> <p>LEARN SEWING MACHINE 2 - 4PM</p>		<p>CHARITY SEWING 10:30PM - 3:30PM</p>		
THIRD		<p>OPEN STUDIO 10:30AM - 2:30PM</p> <p>LEARN SEWING MACHINE 2 - 4PM</p>		<p>CHARITY SEWING 10:30PM - 3:30PM</p>		
FOURTH		<p>OPEN STUDIO 10:30AM - 2:30PM</p> <p>LEARN SEWING MACHINE 2 - 4PM</p>		<p>CHARITY SEWING 10:30PM - 3:30PM</p> <p>SEWING WITH LUCY 5:30PM - 7:30PM</p>		<p>LEARN TO CROCHET 11AM - 1 PM</p>

[HTTPS://WWW.SEW4SERVICE.ORG/ALLIANCE](https://www.sew4service.org/alliance)



# MEDINA CHAPTER MONTHLY SCHEDULE

STORE HOURS: FRI 5PM - 9PM, SAT 10AM - 5PM, SUN 11AM - 4PM

VOLUNTEERS ARE INVITED TO COME DURING ALL STORE HOURS - REGISTER ONLINE



SUNDAY	MONDAY	TUESDAY	WEDNESDAY	THURSDAY	FRIDAY	SATURDAY
FIRST				CHARITY SEWING EVENT (SUSAN) 10AM - 2PM	SEWING WITH LUCY 5:30PM - 7:30 PM	
SECOND				LEARN TO USE A SEWING MACHINE OR SERGER CLASS 5:30PM - 7:30 PM		
THIRD		KNITTING WITH SUSAN CLASS 5:30PM - 7:30 PM			STITCH N SIP 6PM - 9PM (ONE FRIDAY A MONTH)	
FOURTH				CHARITY CROCHETING (KATHIE) 1 PM - 5PM CROCHETING WITH KATHIE CLASS 5:30PM - 7:30 PM		

[HTTPS://WWW.SEW4SERVICE.ORG/MEDINA](https://www.sew4service.org/medina)

